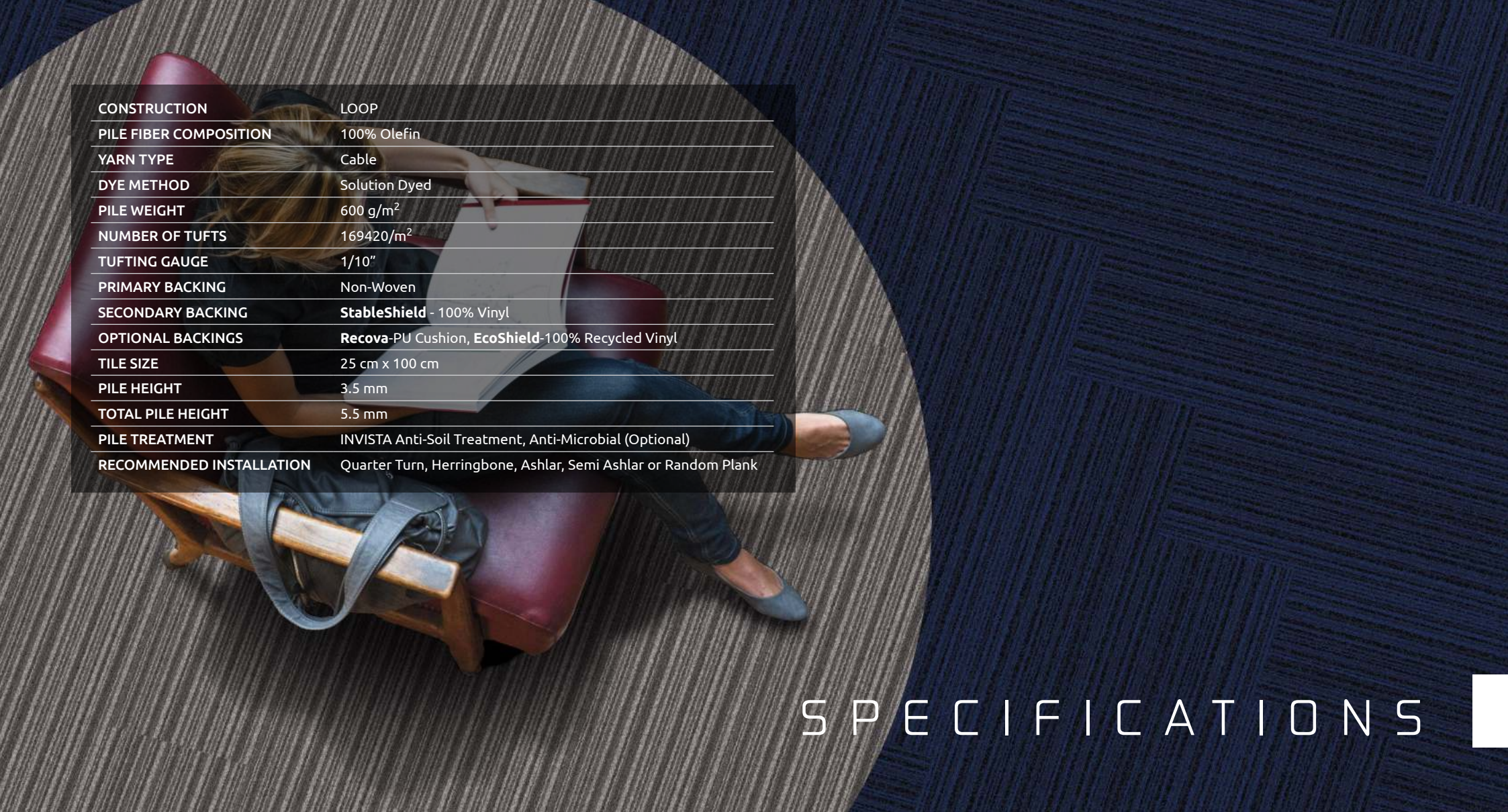


TRANCE





|                          |  |
|--------------------------|--|
| CONSTRUCTION             | LOOP   |
| PILE FIBER COMPOSITION   | 100% Olefin  |
| YARN TYPE                | Cable  |
| DYE METHOD               | Solution Dyed  |
| PILE WEIGHT              | 600 g/m <sup>2</sup>   |
| NUMBER OF TUFTS          | 169420/m <sup>2</sup>  |
| TUFTING GAUGE            | 1/10"  |
| PRIMARY BACKING          | Non-Woven  |
| SECONDARY BACKING        | <b>StableShield</b> - 100% Vinyl                                 |
| OPTIONAL BACKINGS        | <b>Recova</b> -PU Cushion, <b>EcoShield</b> -100% Recycled Vinyl |
| TILE SIZE                | 25 cm x 100 cm   |
| PILE HEIGHT              | 3.5 mm   |
| TOTAL PILE HEIGHT        | 5.5 mm   |
| PILE TREATMENT           | INVISTA Anti-Soil Treatment, Anti-Microbial (Optional)           |
| RECOMMENDED INSTALLATION | Quarter Turn, Herringbone, Ashlar, Semi Ashlar or Random Plank   |

# SPECIFICATIONS

# COLOURLINE



TRANCE - 625



TRANCE - 626



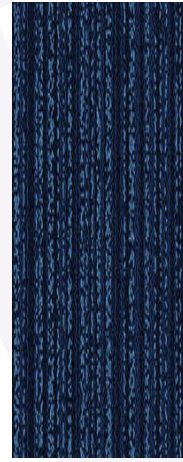
TRANCE - 645



TRANCE - 646



TRANCE - 647



TRANCE - 656



TRANCE - 658



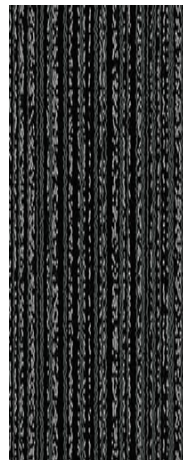
TRANCE - 666



TRANCE - 674



TRANCE - 675



TRANCE - 676



TRANCE - 677



TRANCE - 678



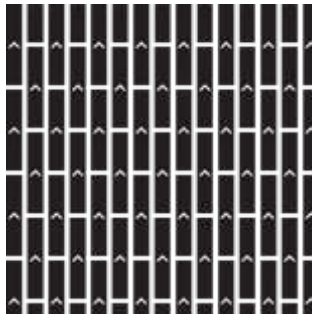
TRANCE - 679





# HOW TO INSTALL

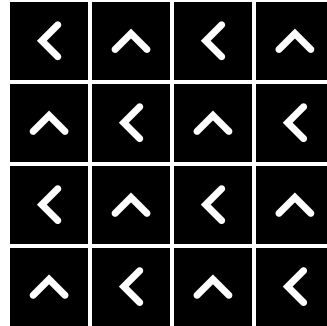
**ASHLAR**



**SEMI ASHLAR**



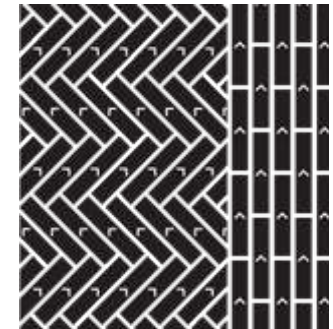
**QUARTER TURN**



**HERRINGBONE**



**RANDOM**





Standard  
*CARPETS*

[www.standardcarpets.com](http://www.standardcarpets.com)